

## SPECIFICATION

3LEDs, SMD2835, 160° Viewing angle, DC12V, 1.08W,  
constant voltage, waterproof IP65



## Features:

1. Adopted SMD2835, high lumen LED, 30-35 LM/led
2. ABS injection, viewing angle 160°
3. Aluminum PCB exposed with better heat dissipation
4. Fire rating to UL94V-0
5. Constant voltage technology, stable performance
6. High light efficient, long life span 50,000 hours
7. IP65

## Applications:

Applied to 6-18CM dept signage such as light box, letter channel, etc

## Warranty:

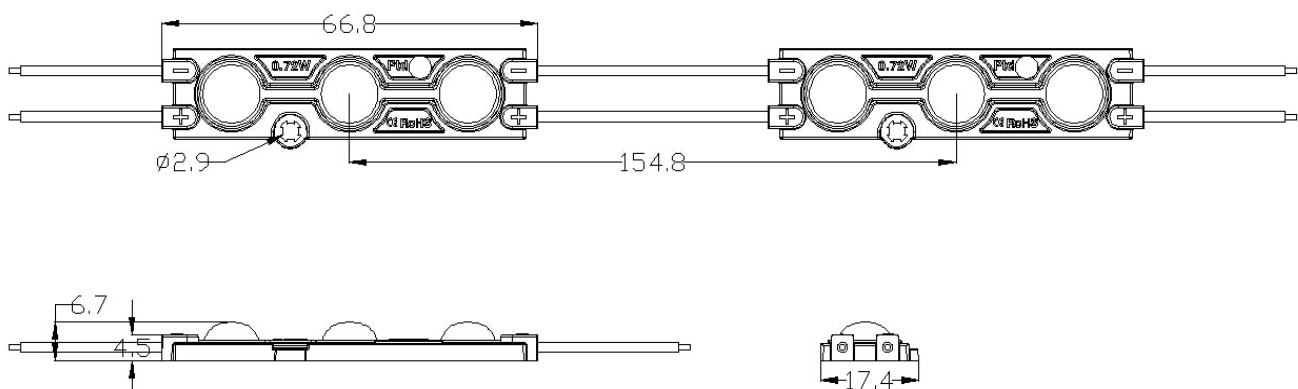
3 years or 13000 hours whichever comes first.

## Picture:



## Dimension:

Unit: mm



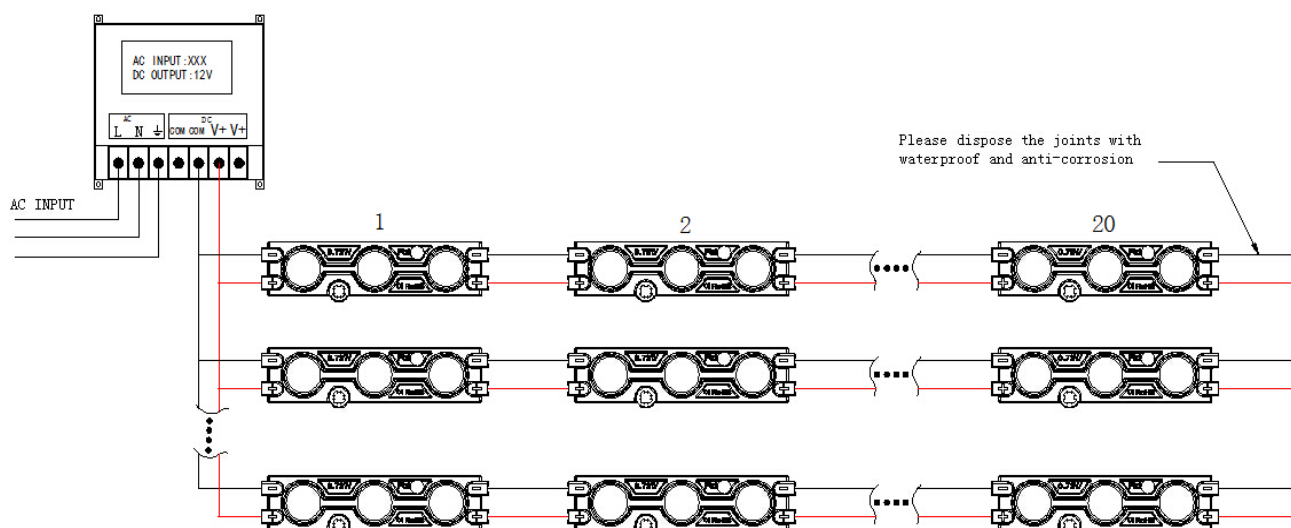
## Specification:

<b>Model</b>	BM2634			
<b>LED</b>	2835 SMD LED			
<b>LED Quantity</b>	3 LEDs			
<b>Lumen (LM)</b>	90-100			
<b>Voltage</b>	12V DC			
<b>Power Consumption</b>	1.08W			
<b>Viewing Angle</b>	160°			
<b>Dimension</b>	66.8x17.4x6.7 mm			
<b>RA</b>	>75			
<b>Color</b>	10000K	6000K	4000K	3000K
<b>Beam Angle</b>	160°			
<b>Driver Model</b>	Constant Voltage			
<b>IP Rate</b>	IP65			
<b>Working Temperature</b>	-25°C ~ +60°C			
<b>Store Temperature</b>	-25°C ~ +70°C			

### Note:

1. Testing environment temperature: 25±3°C.
2. The above data are typical values, the actual data of each single product could differ from the typical values. The data subject to change without prior notice.

## Installation:



### Note:

1. please check and ensure that the anode & cathode for the module's wires are connected to power supply output's anode & cathode accordingly. otherwise, the product can not work normally.

2. double-sided adhesive tape is only used for preliminary fixing. please use the screws or the neutral silicon sealant to fasten the modules, otherwise, defects will be caused, such as product shift, fall off and so on.
3. the maximum cascade quantity of modules is 20 pcs, prohibited to exceed this limitation in actual using.
4. please dispose the exposed wire and the joints with insulation, waterproof and anti-corrosion
5. please ensure that the output voltage of using power supply is  $12\pm5\%$  VDC, and the rated power must be reserved 20% than the actual loading.
6. the using power supply must pass safety certification which have protection function in short-circuit, over-voltage and over-current.
7. during installing, please ask qualified person to count and select the suitable cable according to diameter and length when the connecting cable need to be extended, otherwise, low input voltage to product, fire hazard, due to overheat cable will be caused.