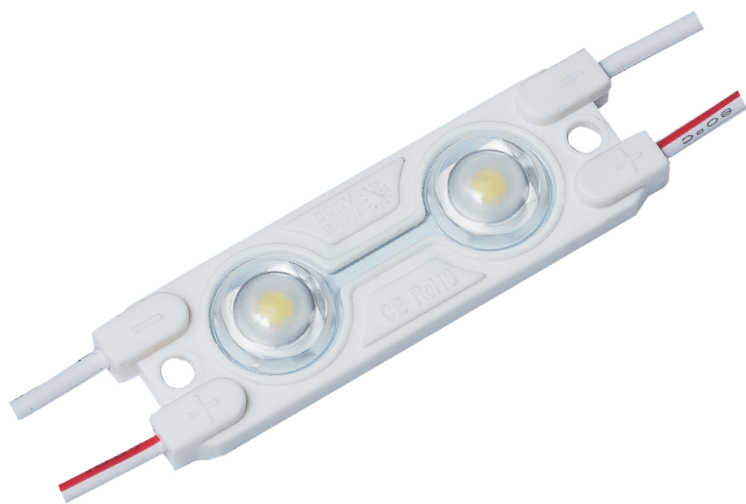


LED Moduled User Manual

Brief Introduction: 2-LEDs SMD 2835 Injection Module, 160°,
DC12V, 0.72W, IP65



INTRODUCTION

ABS as the shell housing, produced by injection molding machines, high performance, anti-UV, fire-proof, dust-proof.

APPLICATION

Applicable for 60- 180mm depth Signage

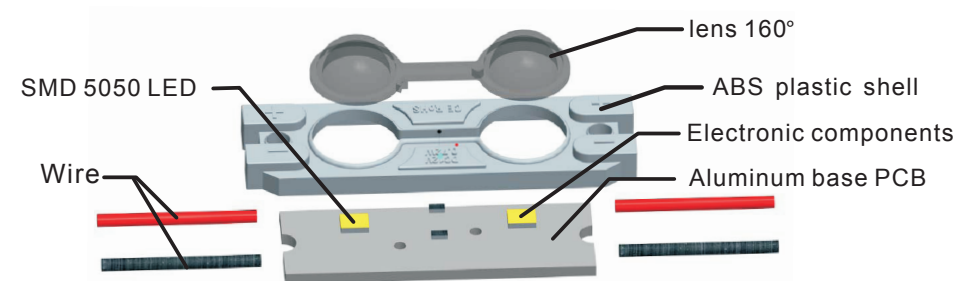
FEATURES

1. Shell adopt flame-retardant engineering plastics, high reliability
2. High brightness SMD2835, 22-24lm per LED
3. Aluminum PCB exposed with better heat dissipation
4. Optical lens of 160° viewing angle
5. Waterproof rate IP65, Fire rating to UL 94V-0

WARRANTY

3 years or 13000 hours, whichever comes first

DIAGRAM



PRODUCT DATA SHEET

OPTICAL ANDELECTRICAL PARAMETERS

Code	LED Color	Color Temperature (K)	Beam Angle (°)	Luminous Flux (lm/pc)	CRI RA	Luminous Efficacy (lm/W)	Working Voltage (V DC)	Working Current (mA/pc)	Power (W/pc)
BM2524	Pure White	6000	160	46	≥ 75	64	12	60	0.72

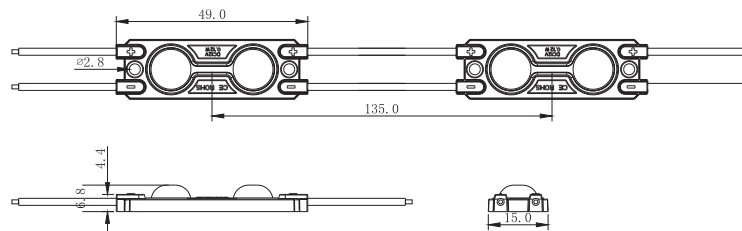
OTHER PARAMETERS

Code	LED Color	Standard Qty per string (pc)	Single-end power feed (pc)	Double-end power feed (pc)	Weight per pc (g)	Working temperature (°C)	Storage temperature (°C)	IP Grade
BM2524	Pure White	20	20	40	18	-20~+65	-25~+75	IP65

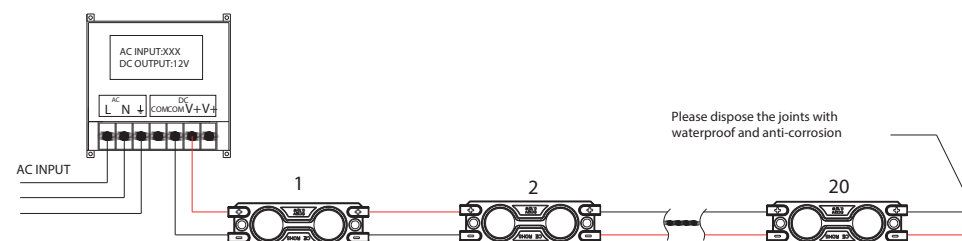
Notes:

1. testing environment temperature: 25± 2
2. the above data are typical values; the actual data of each single product could differ from the typical values. the data subject to change without prior notice.

DIMENSIONS



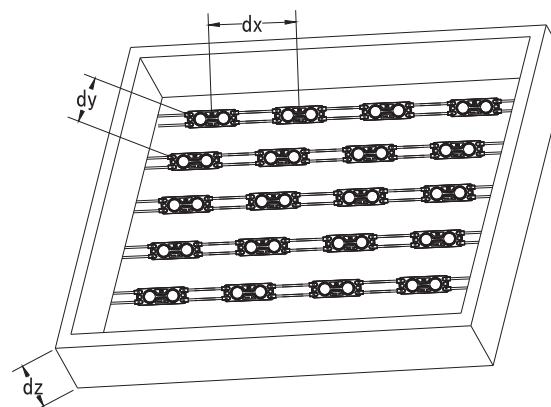
CONNECTING INSTRUCTION



INSTALLATION REFERENCESOLUTION

1.Light Box Layout

Light Box Thickness(mm)	Distance between Module dx (mm)	Distance between Module dy (mm)	Installation Density (pcs/m²)	Illumination Scope (lux)
80	90	70	159	2500- 3200
100	110	90	101	1500- 1900
120	130	110	70	1100- 1500
150	150	130	51	800- 1080



Light box configuration

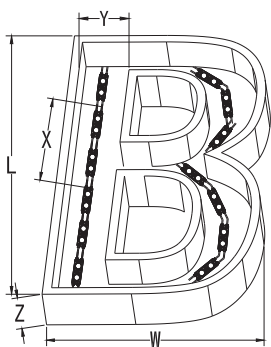
Notes:

1. tested with the modules which built by CCT6000K led
2. the above data was tested with 3MM thickness acrylic board which the light transmittance is 54%
3. all the above data is for reference only

PRODUCT DATA SHEET

2. Installation Example

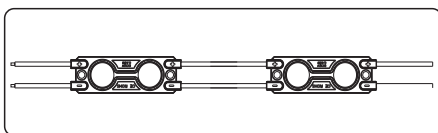
Dimensions L*W(mm)	Thickness Z(mm)	Width of main strokes Y(mm)	Max. Distance between modules(mm)	Used Qty (pcx)	Installation Density (pcs/ m ²)	Surface Illumination Scope (lux)
710*430	80	80	100	21	70	1800-2400
850*520	100	100	110	22	49	1300-1600
1000*650	130	130	120	26	38	1100-1300
1200*710	150	150	150	27	32	900-1100



Notes:

1. tested with the modules which built by CCT6000K led
2. the above data was tested with 3MM thickness acrylic board which the light transmittance is 54%
3. all the above data is for reference only

PARTS TOOLS



LED Modules



Wire connectors



Screws



Electric drill



Knife



Pliers



Power supply

INSTALLATION STEPS

- 1: Clean the installing surface
- 2: Mark the installing place for modules and determine the needed quantity, remain centered installation.
- 3: Peel off the release paper of double-sided adhesive tape in the backing of modules, then stick modules on the installing surface for preliminary mounting.
- 4: Adjust the modules to the best position, then press the double-sided adhesive tape tightly and fasten it by screws.
- 5: Cut off modules to the desired qty, and peel off the insulation skin of wire about 10mm.
- 6: When the wire exposed in the last module, please peel off the insulation skin of wire about 10mm, then connect it by terminals according to the wire's anode & cathode, and please dispose the joints with waterproof and anti-corrosion.
- 7: When connect to external power supply, please ensure that the wire's anode & cathode in the first module are connected with the cable of power supply correctly, waterproof and anti-corrosion.

CAUTIONS

1. Cautions for installation and using:
 - 1) please check and ensure that the anode & cathode for the module's wires are connected to power supply output's anode & cathode accordingly. otherwise, the product can not work normally.
 - 2) double-sided adhesive tape is only used for preliminary fixing. please use the screws or the neutral silicon sealant to fasten the modules, otherwise, defects will be caused, such as product shift, fall off and so on.
 - 3) the maximum cascade quantity of modules is 18 pcs, prohibited to exceed this limitation in actual using.

4) please dispose the exposed wire and the joints with insulation, waterproof and anti-corrosion.

2. Cautions for other parts selected:

- 1) please ensure that the output voltage of using power supply is 12 ± 5% VDC, and the rated power must be reserved 20% than the actual loading.
- 2) the using power supply must pass safety certification which have protection function in short-circuit, over-voltage and over-current.
- 3) during installing, please ask qualified person to count and select the suitable cable according to diameter and length when the connecting cable need to be extended, otherwise, low input voltage to product, fire hazard due to overheat cable will be caused.

WARNING

- prohibited to disassemble, modify this product.
- prohibited to operate the product during power on.
- prohibited to use any organic chemical solvents to contact this product directly or indirectly.
- installation, replair, maintain must be operated by professional persons. prohibited to operate it by unprofessional person.
- prohibited to use any acid or alkaline adhesive to fix this product.
- this product will generate heat during working, must choose material with good cooling performance and installation density must be taken into consideration.
- these products are suitable for use in dry, damp and wet locations.
- these products are only suitable for connection to a circuit from a Class 2 power source.
- these products have not been evaluated for use when connected to a power source that does not comply with Class 2 voltage and energy limited supplies.
- for wet location products, "these products are not required to be enclosed or protected from weather".

DECLARATION

- if the external flexible cable of light box is damaged, please replace it by the manufacturers or their service agent or the qualified persons to avoid a hazard.
- the give data in this data sheet is based on our standard product. there may be existed varies with the actual delivery products. please subject to the measure data for the actual product.
- all illustrations in this user manual are for reference only. please subject to the received goods.
- the product subject to change or modify without prior notice.