

Best for 100-200 mm depth
Double-side emitting light box



20°× 45° 2.0W LED MODULE

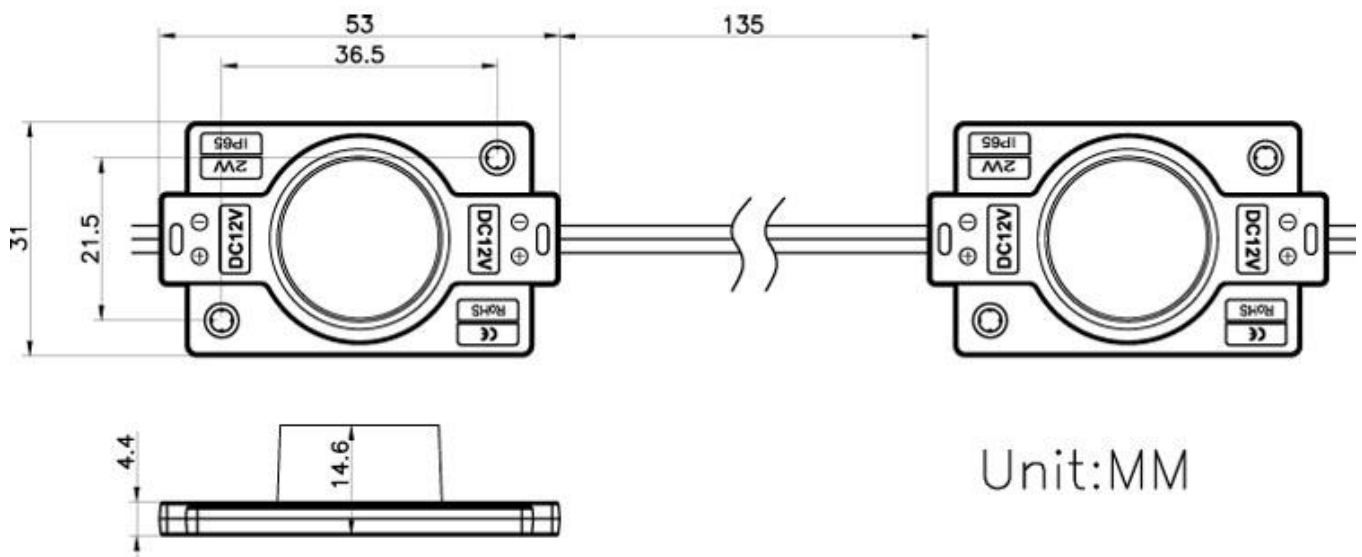
Feature

- Constant Current Technology (CCT), 20pcs per series
- The exposed Aluminum plate for heat dissipation
- Injection molding process, Waterproof: IP 65
- Powered by EMC SMD3030 LED with high quality
- Energy saving, Environment friendly
- Long life span

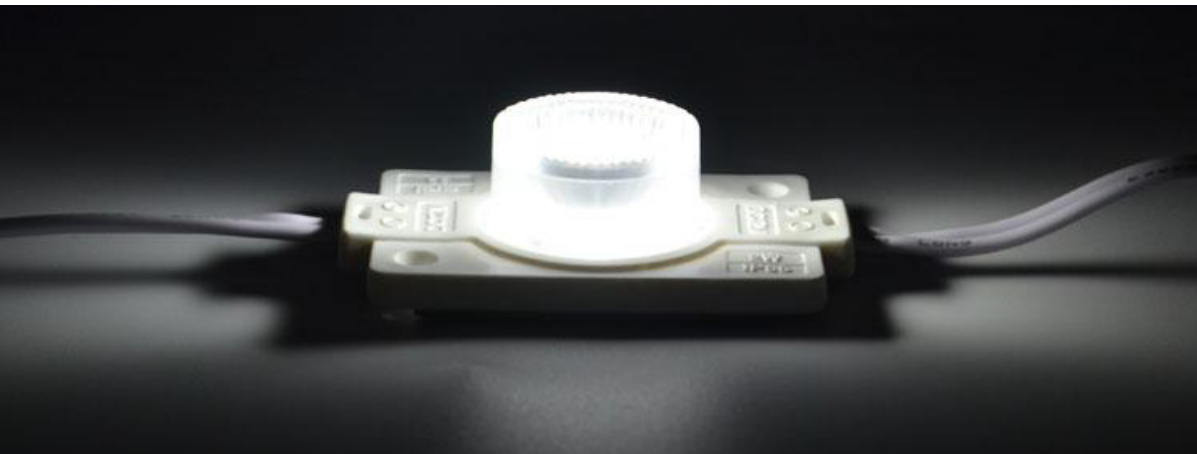
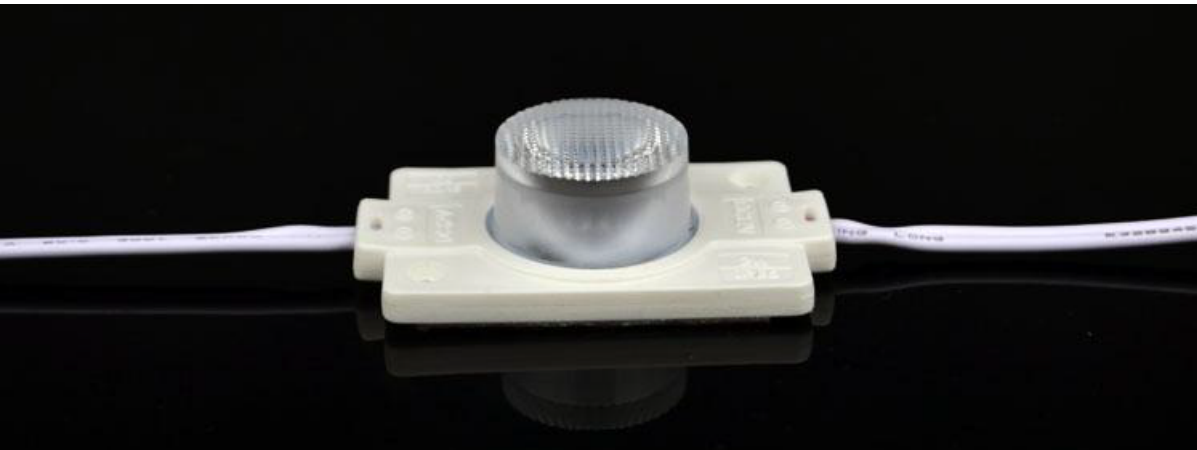
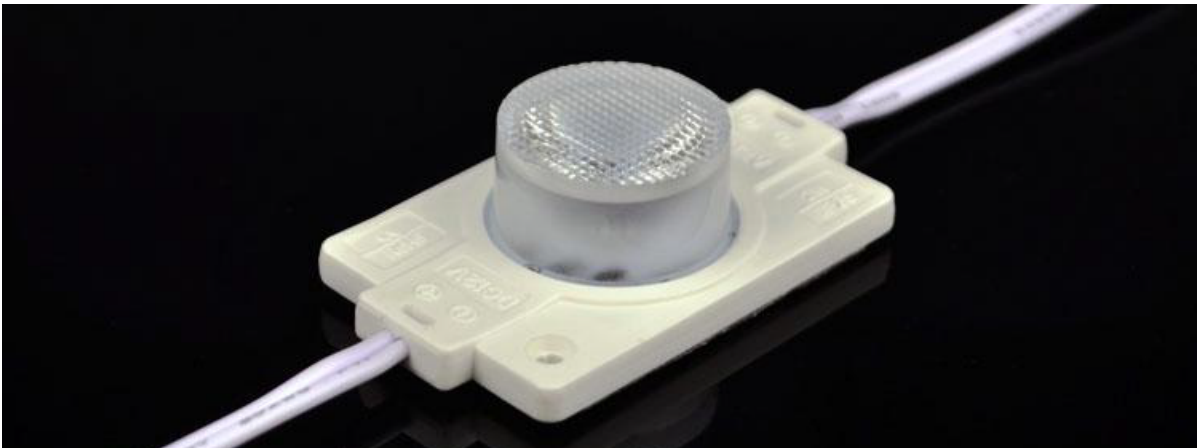
Application

- Side light for advertising double-side light boxes for shopping mall, airport, metro station, showing room,etc.

Drawing



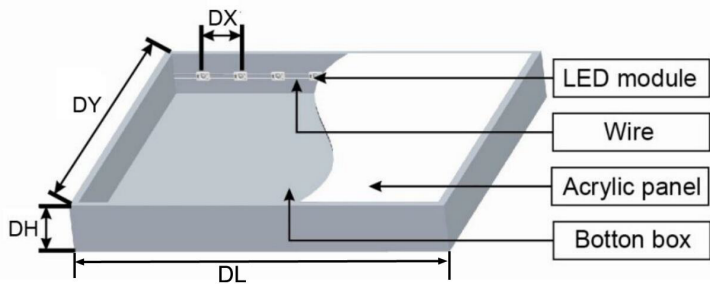
Product Picture



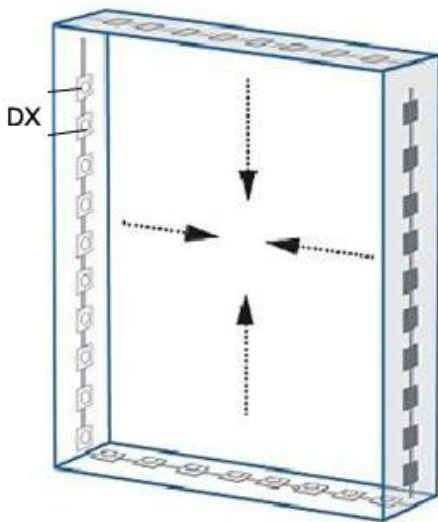
Technical Parameter

Part No.:	OP-H45SM4530-2	
LED Type:	EMC SMD3030 LED	
LED Quantity:	1pcs	
Viewing angle:	20°× 45°	
Lifespan:	50000hrs	
Single LED Brightness /Luminous (lm):	200-210LM	
Available emitting Color:	Warm white:3000-3500K, Pure white:6000-7000K ,	
Working Voltage	DC 12V	
Power	2.0W	
IP rank	IP65	
Driving Way	Constant Current	
Connect	Red and white wire, Red wire is Anode, White wire is Negative electrode, 15CM long,26*0.16 20AWG ULE 328945	
Standard Connection Quantity	20pcs	
Group to cut	Every piece	
Material	Anti-static, Anti-UV,ABS +PC lens cover+Aluminum PCB	
Dimension	53*31*14.6mm	
Appearance Color	white	
Fixed Method	Screw	M3*15 Screw
	Tape	3M
Working Temperature	-20 ~ +60	
Storage Temperature	-30 ~ +60	
Storage Environment	Indoor ventilation, Air should be no corrosive gas, and avoid direct sunlight	

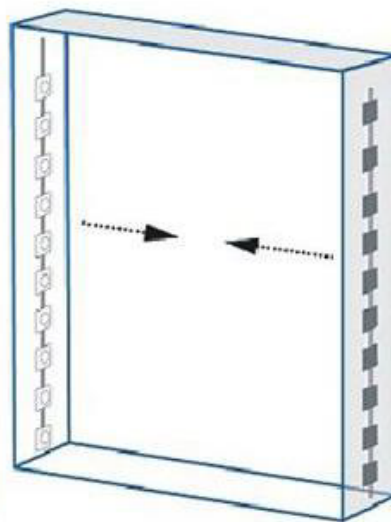
Installation Reference Scheme



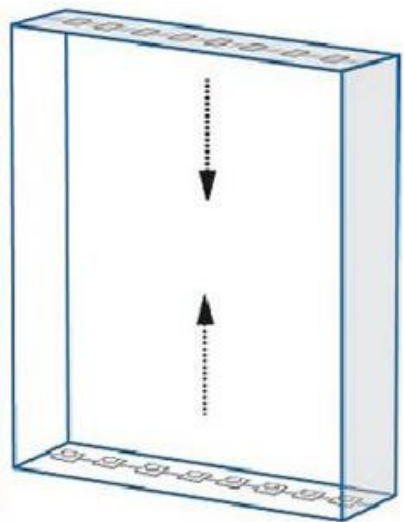
DH: Box Thickness
 DX: LED Horizontal Distance
 DY: Light box Width
 DL: Light box Length



Light emitting direction from 4 sides.



Light emitting direction from two parallel sides.



Light Box Length (DL)	Light Box Width (DY)	Light Box thickness (DH)	Light Direction	LED distance (DX)	LED quantity	Luminous (Lux)
1000MM	1000mm	150mm	From 2 sides	80mm	26pcs	900-1000
		150mm	From 4 sides	100mm	40pcs	1500-1800
		200mm	From 2 sides	80mm	26pcs	600-800
		200mm	From 4 sides	100mm	40pcs	1200-1600

Remark:

1. The test is done with single-sided light box with 50% luminous transmittance 3mm white acrylic board.
2. The above luminescent data is the data with uniform surface illumination under this depth.
3. The above data is for reference only.